



**Su-Kam®**

**Live life ... uninterrupted ...  
around-the-clock**



**INTRODUCING  
DT-6S  
6 STAGE  
BATTERY CHARGING  
TECHNOLOGY**



[www.su-kam.com](http://www.su-kam.com)

**FALCON**  
SINE WAVE UPS

**700/12V - 1600/24V**

Design Registration No 198662 & 9423 & 11727  
Copyright © 2010 Su-Kam Power Systems Ltd.



## FALCON 1600 / 24V

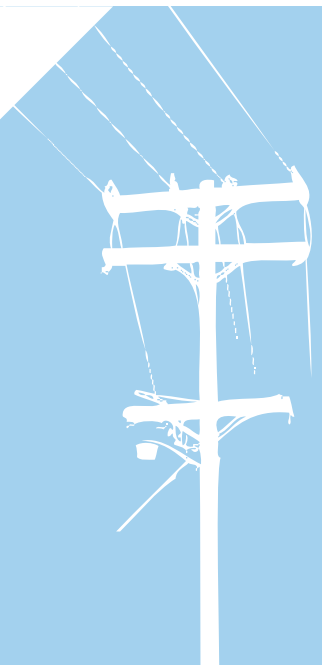
Patent Protected

Copyright © 2010 Su-Kam Power Systems Ltd.



### Provides 100% pure Sine Wave output – purer than power from the grid

Based on a high-end microcontroller technology the FALCON provides Pure Sine Wave output that is essentially the same as utility-supplied grid power. Which is 100% clean, regulated, completely stable and distortion free and absolutely safe for running the most sophisticated and sensitive appliances ... silently.



### Instant switchover

In the event of a power failure, the switch over process to battery mode takes just a few milliseconds. Which means that the power supplied to connected appliances, like computers is not interrupted, thus also avoiding the chances of system's rebooting. In UPS mode you may power up your computer and sophisticated appliances.



### Automatic overload regulation

In case of overload the Su-Kam's Falcon UPS resets itself automatically to turn on again. The system will retry 8 times to run the existing load. Moreover, the sound of repeated beep alarm gives the user adequate time to reduce the load without having to shut down the system. So the user will not have to go to the UPS to reset. In case the load is still not reduced the system will shut down automatically to save you from any losses.



### System and appliances fully protected

FALCON's superior **HCLC (High Cut / Low Cut) Technology** provides complete and constant protection to your appliances in case of any irregularities or disturbances in the grid supply. These include any short circuits, high voltage, low voltage or overloads. Your expensive and sensitive equipment like TVs, home theatres, satellite dishes, computers, printers, copiers and fax machines are spared from damage, thus increasing their longevity.



### Highly energy efficient

The FALCON is equipped with an SMPS-based charger, which has the highest power factor. This minimizes the amount of AC power required to charge the batteries, thereby reducing your power consumption considerably. The SMPS charger also provides ripple free DC supply to the batteries, hence enhancing battery life.

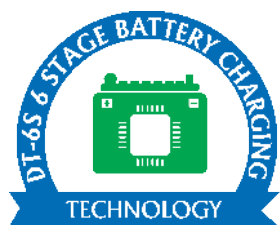
It is also smaller in size, and generates less heat.





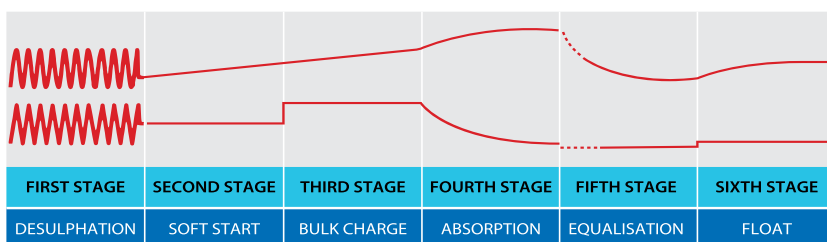
## FALCON 900 / 12V

Design Registration No.: 198662,  
Copyright © 2010 Su-Kam Power Systems Ltd.



### Benefits of DT-6S 6 Stage charger are :

- ✓ Optimum back up time from battery
- ✓ Fast and full charging, ultimately leading to get a longer battery life
- ✓ Does not require frequent water topping of battery hence reducing maintenance cost and efforts
- ✓ Controls the emission of harmful gases into the environment



## Powered with DT-6S technology

DT -6S technology provides effective de- sulphation of battery ensuring 10% faster charging and battery life increment of at least 15% over existing technology.

### De sulphation

- High voltage, low current helps micro pulses to detach the sulphate crystal from the plates of battery
- Battery Produces optimum Power

### Soft Start Charging

- Starts Charging battery at low voltage and low current.
- Waits till the battery gets charged

### Bulk Charging

- Gives high voltage and predefined current to the battery
- Battery reaches about 80% of charge level

### Absorption Charging

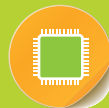
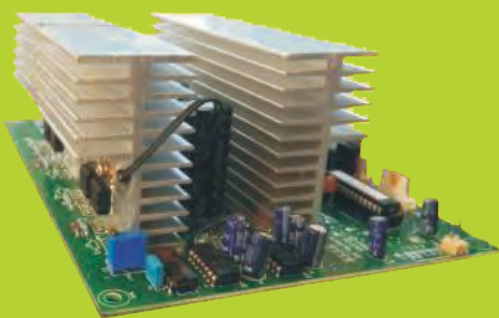
- Battery charger detects the charging till it slowed down at about 80% of charge level
- Then the charging current is fed slowly till the level reaches 100%

### Equalization Charging

- High Voltage Shakes the battery electrolyte and makes the electrolyte more efficient for charging

### Float Maintenance Stage

- Charging Voltage is reduced to a level and held Constant
- Maintains the full charge level of the battery



## SMD Technology (Surface Mount Device)

The PCB card is based on Surface Mount Device Technology and reduces human error while manufacturing. Systems based on this SMD technology are more efficient than other conventional systems.

## Compatibility with batteries

Two way slider switch gives you the option to select any battery type & charging.

- LA
- Tubular

For better performance use Su-Kam batteries.

## UPS mode/Wide UPS mode

The two-way slider selection switch gives you the option to select the system mode. You can select UPS mode for sensitive appliances like TVs, monitors, scanners or Wide UPS mode for tubelights, fans, room coolers and refrigerators.

## User-friendly graphical display with audible alerts

FALCON's bright graphical displays equipped with an audible alarm keeps you informed and alert about the system's condition.







## FALCON 700 / 12V

Design Registration No.: 198662,  
Copyright © 2010 Su-Kam Power Systems Ltd.

## Wheeled trolleys: Knight & Sturdy

You can choose a trolley with castors, for easy movement around your home, if required. This portability also helps in keeping the flooring spotless, even in the event of acid spillage from the battery!



KNIGHT TROLLEY



STURDY TROLLEY\*

\* wheels optional





**TUBULAR**  
(150Ah-180Ah)

- Life: 1200 cycles promise\*
- Suitable for frequent power cuts
- Low footprint
- Low maintenance: Larger electrolyte volume.



**JUMBOZ**  
(150Ah-180Ah)

- Thick spines for excellent performance
- Float guide indicator
- Aesthetically designed
- Longer Life: Corrosion resistant alloy



**LEAD ACID**  
(100Ah-200Ah)

- High charge acceptance
- Reduced fumes: Microporus vent plug with flame arresting property.
- Better performance: Extra thick plates

## Load Chart

FALCON 700 / 12V			
Load*	A	B	C
PC	1		
TV			1
Tube light	2	4	4
Fan	2	3	2
Room Cooler			
CFL	1	1	1

FALCON 900 / 12V			
Load*	A	B	C
PC	1		
TV			1
Tube light	3	2	4
Fan	3	3	4
Room Cooler		1	
CFL	1	1	1

FALCON 1600 / 24V			
Load*	A	B	C
PC	1		
TV			1
Tube light	7	6	8
Fan	7	6	8
Room Cooler		1	
CFL	2	2	2

\*Note: Indicative values only, actual calculation depends on manufacturer specifications.  
PC upto 150W, Tube Light of 40W, CFL of 11W, TV - 19-21",  
Ceiling Fan 48mm (3 Blades, 100-200mm sweep) and Room Cooler - 200W

## Ek nayi soch

Su-Kam is one of India's most admired power solutions providers with a growing presence across India and over 70 countries worldwide.

### World-class Research & Development Team

Su-Kam prides itself in delivering products with a creative blend of design and innovation. After a rigorous R&D exercise, about 160 products have taken shape in 7 state-of-the-art manufacturing facilities. That's why our R&D unit has earned accolades and recognition from the Department of Scientific & Industrial Research of India. Today, the facility is credited with numerous patents and intellectual property rights in design, technology and innovation. Recently, it also won the Elcina-EFY Award for Excellence, 2010. Research is currently under way to introduce a range of renewable solar energy products in the market.

### Intellectual Property Rights

Su-Kam's has over 70 technology patents, 141 copyrights and 53 trademarks to its credit. It has 50 design patents. Nearly two technology patents are filed in a month, and the R&D team is poised to file a record breaking 100 technology patents in the coming days.

### International Quality Certification

ISO 9001:2008 Quality Management System Certification

ISO 14001:2004 Environmental Management System Certification

### Partners in Growth

Su-Kam solar division has been approved by the Ministry of New and Renewable Energy (MNRE) and extends 30% subsidy to its customers.

### Awards & Accolades

Enertia Award

Powerbrand India

Consumer Superbrand

Amity HR Growth Award

National Award for Quality Products

Sectoral Award – Exports, Ministry of Commerce, Govt. of India

Business Model Innovation Award by Marico Innovation Foundation



**SU-KAM POWER SYSTEMS LTD.**

Website: [www.su-kam.com](http://www.su-kam.com)  
Solar Website: [www.sukam-solar.com](http://www.sukam-solar.com)

E-mail India: [info@su-kam.com](mailto:info@su-kam.com)  
E-mail Export: [export@su-kam.com](mailto:export@su-kam.com)

Whatsapp India: +91 70426 98991  
Whatsapp Export: +91 81301 92199

#### How to Install this Product?

Watch our step-by-step installation video for these products on our Youtube Channel.  
We have made many interesting videos to help you understand various features in our products.



#### Got Questions About this Product?

Please call our toll-free number (1800 102 4423 - for India only) or message us on our Facebook Page and we will answer all your questions.

